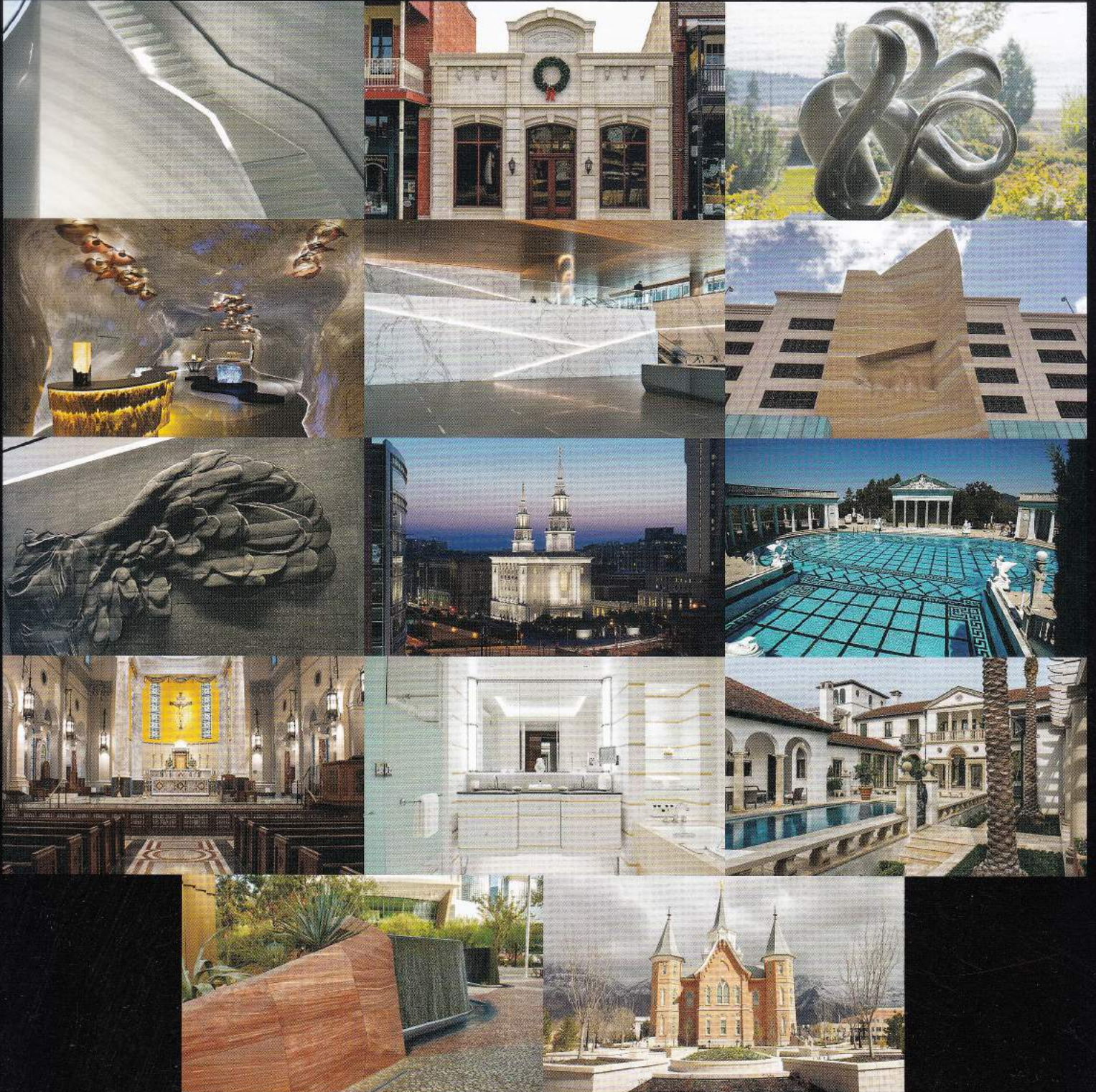




# 2018 PINNACLE AWARDS OF EXCELLENCE



OTHER  
PROJECT  
TEAM  
MEMBERS

ARCHITECT/  
INTERIOR DESIGNER

BK Interior Design and  
Architectural Planning

STONE INSTALLER

MM Galleri

STONE SUPPLIER

De Angelis Giovanni, Srl

STONE

Statuario GDA/Statuarietto marble

JUROR'S COMMENT

"Remarkable. It's an important time in the industry and this is pushing the envelope. The most innovative use of natural stone among all the submissions. This technology is an industry game-changer!"

## Commercial Interior

MM Galleri by Sharikat Stone Singapore

Owner



## Bent and Light Singapore Showroom

Singapore

Inspired by the underwater world in the story of *Finding Nemo* and born from a desire to break the perception that marble is rigid and heavy, MM Galleri acted on these ideas and had the "Bent and Light" project created as their stone showroom.

This new bent marble technology was not only applied to the showroom's floors, walls, and ceilings, it also forms the creation of furniture pieces, such as a bar counter, spiral shaped table, benches, and more that maximizes marble's flexibility and versatility.

Bent and Light utilized a proprietary process for reinforcing thin slices of marble with fiberglass to aid flexibility to recreate the underwater experiences depicted in the movie. Bent marble imitates the shapes of those environments including a garden with corals, jellyfish, and other underwater life. Decorative lighting is also a critical part of the design.

Challenged with how to apply the thin marble pieces so that the patterns achieved a continuous veining appearance, the team covered the seams with a special treatment to make the joining pieces appear more fluid.

The innovator's inspiration became reality in his desire to maximize the use of marble but also reduce stone waste. This method requires only 5% of natural marble material compared to a normal application since the resource is utilized more efficiently and minimal waste is produced.

Fabricated in Indonesia, the process required the incorporation of a model built with production sequence numbers. Installation of the 530 meter showroom in its 4th floor Singapore location carefully followed the model sequence numbers and was completed without any drilling into the material.